



US007639983B2

(12) **United States Patent**
Irazoqui-Pastor et al.

(10) **Patent No.:** **US 7,639,983 B2**
(45) **Date of Patent:** ***Dec. 29, 2009**

(54) **HEADSTAGE**

(75) Inventors: **Pedro Irazoqui-Pastor**, Durham, NC (US); **James C Morizio**, Durham, NC (US); **Vinson L Go**, Wake Forest, NC (US); **Jack D Parmentier**, Apex, NC (US)

5,994,966	A *	11/1999	Stikvoort	330/306
6,402,689	B1	6/2002	Scarantion et al.	600/300
7,187,967	B2	3/2007	Kennedy	600/544
7,324,035	B2 *	1/2008	Harris et al.	341/155
2005/0090756	A1 *	4/2005	Wolf et al.	600/546
2005/0113703	A1 *	5/2005	Farrington et al.	600/509
2006/0250180	A1 *	11/2006	Hughes	327/551

(73) Assignee: **Triangle BioSystems, Inc.**, Durham, NC (US)

(*) Notice: Subject to any disclaimer, the term of this patent is extended or adjusted under 35 U.S.C. 154(b) by 0 days.

This patent is subject to a terminal disclaimer.

(21) Appl. No.: **12/033,220**

(22) Filed: **Feb. 19, 2008**

(65) **Prior Publication Data**

US 2008/0146960 A1 Jun. 19, 2008

Related U.S. Application Data

(63) Continuation of application No. 10/971,915, filed on Oct. 23, 2004, now Pat. No. 7,346,312.

(51) **Int. Cl.**
H04B 1/04 (2006.01)

(52) **U.S. Cl.** **455/41.2; 455/128**

(58) **Field of Classification Search** 455/91, 455/95, 100, 103, 120, 127.2, 127.3, 128, 455/129; 330/306; 600/546

See application file for complete search history.

(56) **References Cited**

U.S. PATENT DOCUMENTS

3,195,533 A * 7/1965 Fischer 600/508

OTHER PUBLICATIONS

Pedram, Mosheni, Khalil, Najafi, "A Low Power Fully Integrated Bandpass Operational Amplifier for Biomedical Neural Recording Applications." 24th Annual Int'l Conference of the IEEE Engineering in Medicine and Biology Society, Houston, TX (Oct. 23-26, 2002).

Irazoqui-Pastor, Mody and Judy, "In-Vivo EEG Recording Using a Wireless Implantable Neural Transceiver," 1st Int'l IEEE EMBS Conference on Neural Engineering, Capri Island, Italy (Mar. 20-22, 2003).

Irazoqui-Pastor, Pedro. (2003) Transcutaneous Inductively Powered Neural Recording System [Doctoral Dissertation]. University of California; Los Angeles, CA 2003.

Irazoqui-Pastor, Pedro, Mody, Istvan, Judy, Jack W. Transcutaneous RF-Powered Neural Recording Device; undated related technology.

* cited by examiner

Primary Examiner—Blane J Jackson

(74) *Attorney, Agent, or Firm*—MacCord Mason PLLC

(57) **ABSTRACT**

A headstage for a Neural Data Acquisition System is shown and described. In one embodiment, the headstage includes at least one Input Pre-amplifier, and a multiplexer (MUX) for multiplexing at least one channel. In one embodiment, the input filter of the Input Pre-amplifier is tuned by adjusting the gate voltage of a transistor operating in sub-threshold mode.

27 Claims, 5 Drawing Sheets

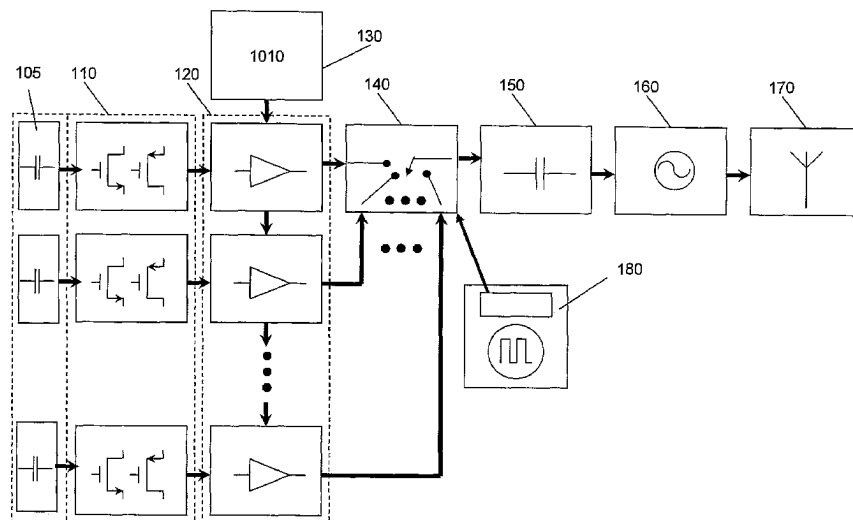


Figure 1

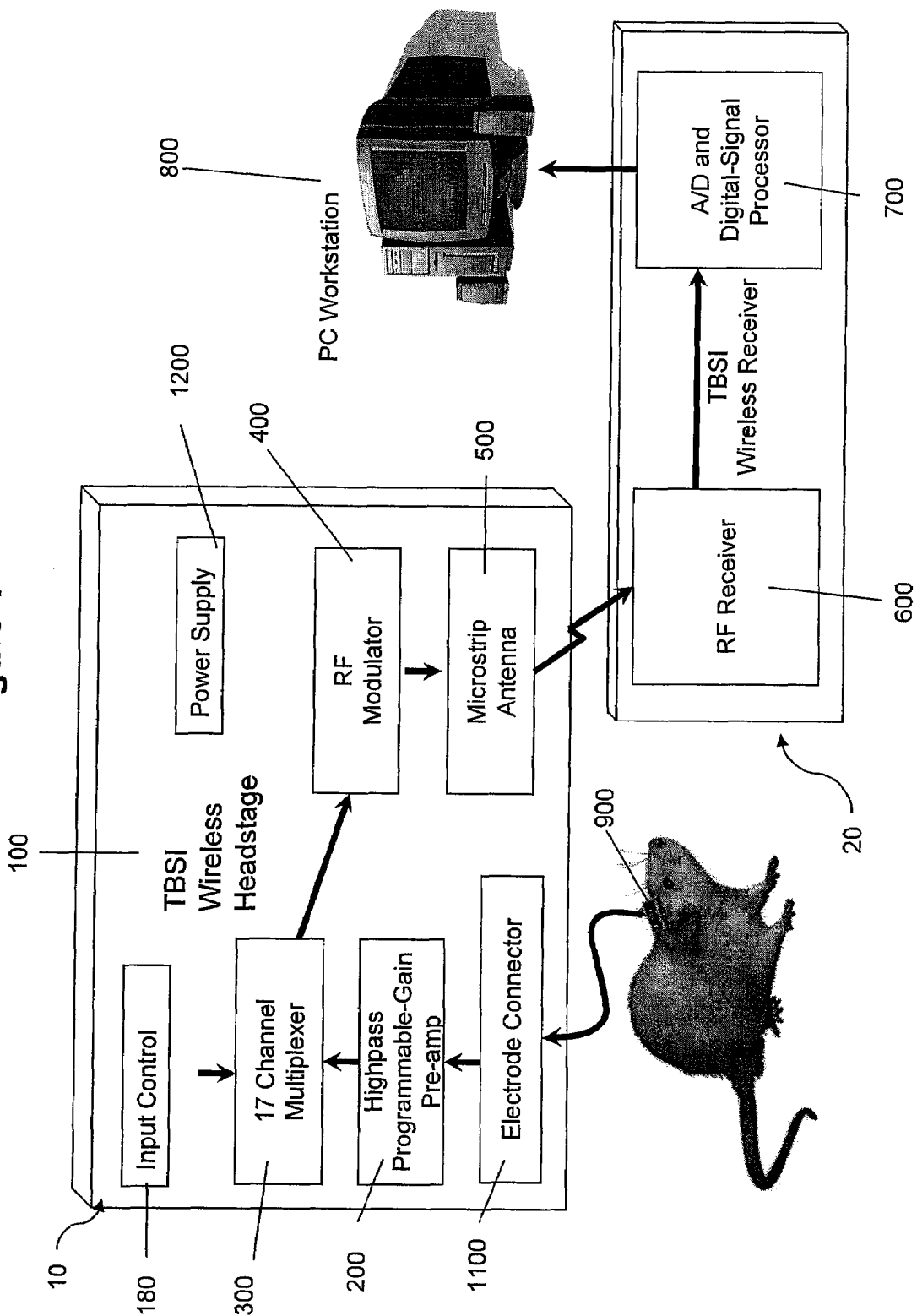


Figure 2

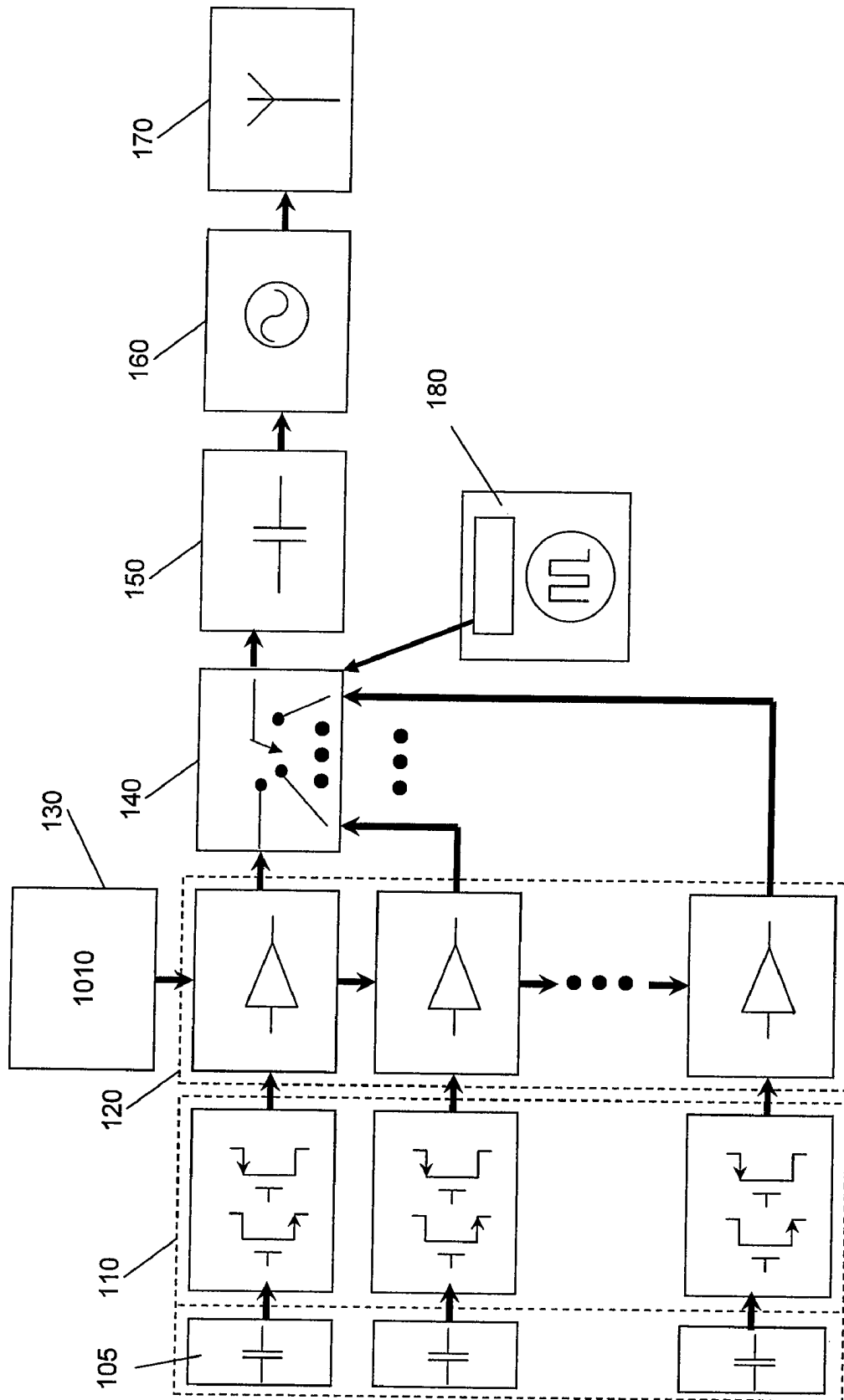


Figure 4

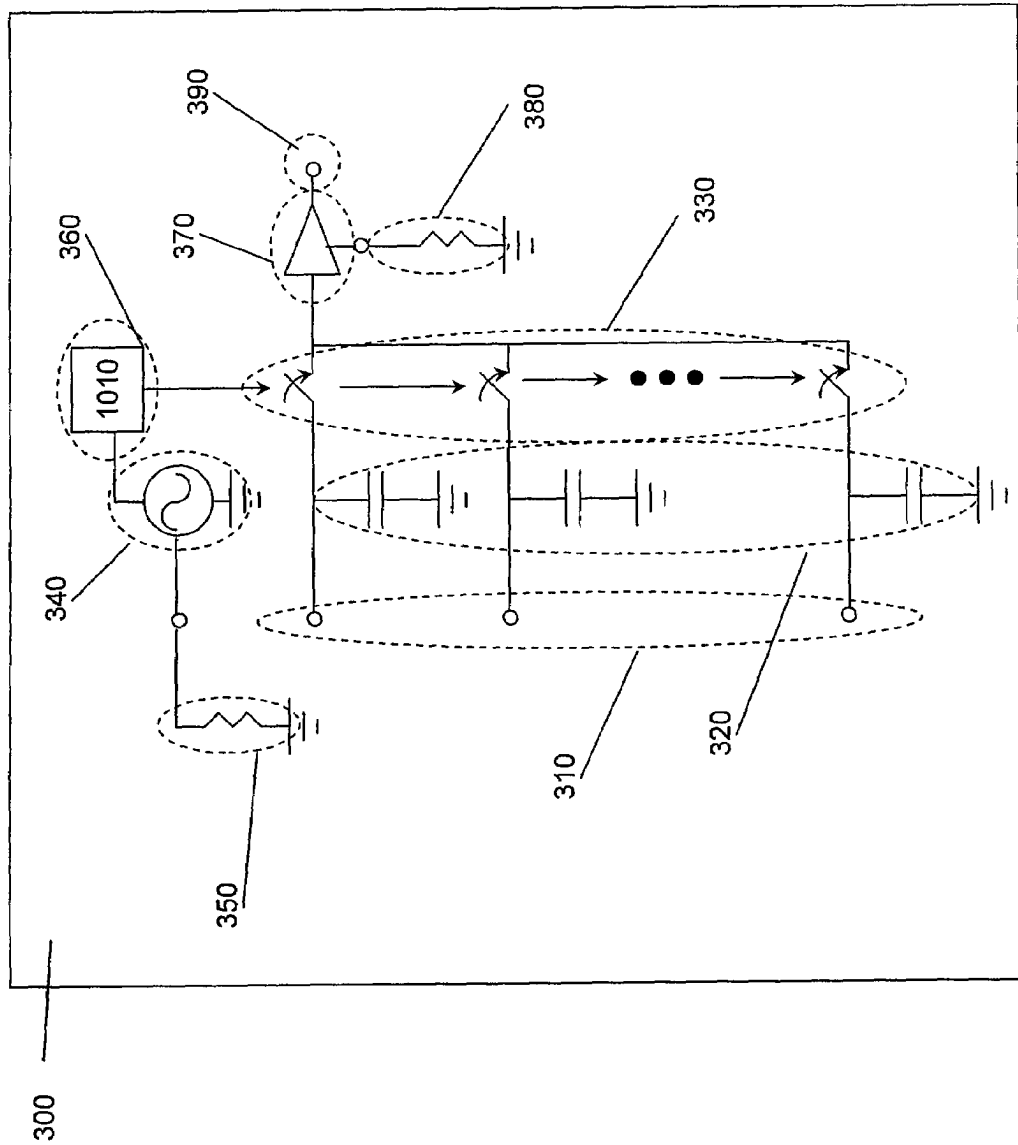
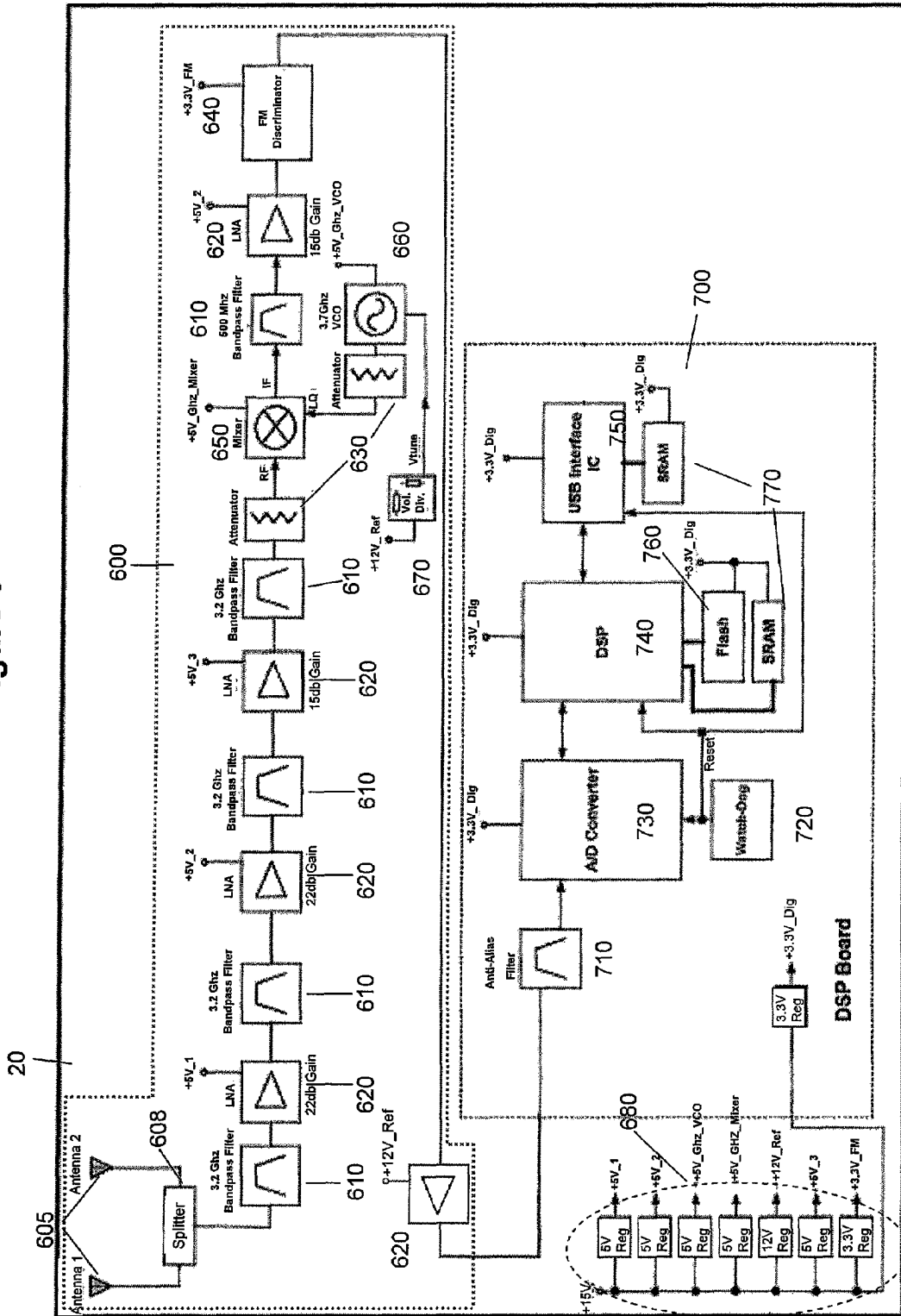


Figure 5



1

HEADSTAGE

This application is a continuation of U.S. patent application Ser. No. 10/971,915 filed on Oct. 23, 2004, now U.S. Pat. No. 7,346,312.

BACKGROUND OF THE INVENTION

(1) Field of the Invention

The present invention relates generally to neural monitoring and, more particularly, to wireless neural data acquisition.

(2) Related Technology

The use of wireless devices to capture neural data is known in the art. Irazoqui-Pastor et al. in "*In-Vivo EEG Recording Using a Wireless Implantable Neural Transceiver*," 1st International IEEE EMBS Conference on Neural Engineering, Capri Island, Italy (Mar. 20-22, 2003) describe recording in-vivo EEG signals using a wireless implantable neural transceiver. This device is inductively powered, does not have selectable gain, digital programmability, or band-pass capability. This device also uses differential input amplifiers, does not use a multiplexer (MUX) and thus it can only record from a single channel. It uses an inefficient voltage-control oscillator (VCO) with a power amplifier, which provides low transmission range and low reliability with large power consumption. This invention also uses a cumbersome and unreliable monopole antenna. Furthermore, this invention does not have a receiver.

Pedram Mohseni and Khalil Najafi in "*A Low Power Fully Integrated Bandpass Operational Amplifier for Biomedical Neural Recording Applications*," 24th Annual International Conference of the IEEE Engineering in Medicine and Biology Society, Houston, Tex. (Oct. 23-26, 2002) teach a system that uses a single sub-threshold metal oxide semiconductor field-effect transistor (MOSFET) at the input to adjust the RC pole location generated by the capacitance between the recording electrode and the biological tissue. The device was tuned using on-chip resistors which had to be laser-trimmed individually for each chip, which then worked only with the electrode for which it had been trimmed. Additionally the amplifiers experienced significant drift as a result of the manner in which the input was connected.

These technologies have either poor reliability and/or are impractical for large-scale use. Thus, a need exists for a wireless multi-channel neural data acquisition system that is of robust design, low power-consumption, and flexible with tunable bandpass filtering and selectable gain.

SUMMARY

The present invention is directed to a headstage for a wireless neural data acquisition system for monitoring neural activity.

The present invention is still further directed to a device for amplifying a signal.

The present invention is alternatively further directed to a method of using a wireless neural data acquisition system for monitoring.

Accordingly, one aspect of the present invention is to provide a wireless neural data acquisition system, including: a headstage, an RF receiver, an analog-to-digital converter, a digital signal processor, and a communication interface. The headstage comprising: at least one Input Pre-amplifier high-pass filter and amplifier, a multiplexer (MUX), an RF Modulator comprising a voltage control oscillator (VCO), a transmitting antenna, and a power supply. The RF receiver comprising: at least one receiving antenna, at least one RF

2

bandpass filter, at least one RF amplifier, at least one RF attenuator, and an FM Demodulator. The pre-amplifier is a dual on-chip sub-threshold MOSFETs for each channel with two off-chip tuning resistors for all channels, the impedance of the RF modulator is such that it allows the MUX to drive the RF stage directly, the antenna impedance is matched to the VCO output, the FM demodulator is an FM phase discriminator, and the A/D converter and DSP provide real-time signal processing. The components are connected such that the input signal coming from the electrode goes through a high-pass filter then to the amplifier then to the MUX then to the RF modulator then to the transmitting antenna then to the RF receiver antenna(s) then to at least one bandpass filter, amplifier, and attenuator then to the FM demodulator then to the communication interface. Thus providing increased power efficiency, compact headstage size, robust wireless signaling, and multiplexing for accurate, reliable transmission of neural signal data.

Another aspect of the present invention is to provide a wireless neural data acquisition headstage, comprising:

at least one Input Pre-amplifier band-pass filter and amplifier,

a multiplexer (MUX)

an RF Modulator comprising a voltage control oscillator (VCO)

a transmitting antenna

and a power supply.

wherein the pre-amplifier is a dual on-chip sub-threshold MOSFETs for each channel with two off-chip tuning resistors for all channels, the impedance of the RF modulator is such that it allows the MUX to drive the RF stage directly, and the antenna impedance is matched to the VCO output;

wherein the components are connected such that the input signal coming from the electrode goes through a band-pass filter then to the amplifier then to the MUX then to the RF modulator then to the transmitting antenna;

thereby providing

increased power efficiency, compact headstage size, robust wireless signaling and multiplexing for accurate, reliable transmission of neural signal data.

Yet another aspect of the present invention is to provide a device for amplifying a signal, comprising: at least one Input Pre-amplifier band-pass filter and amplifier; wherein the pre-amplifier is a dual on-chip sub-threshold MOSFETs for each channel with two off-chip tuning resistors for all channels.

Still another aspect of the present invention is to provide a method of neural data monitoring, comprising the steps of: A. providing a wireless neural data acquisition system according to the present invention and B. acquiring data from the wireless neural data acquisition system.

These and other aspects of the present invention will become apparent to those skilled in the art after a reading of the following description of the preferred embodiment when considered with the drawings.

BRIEF DESCRIPTION OF THE DRAWINGS

FIG. 1 is a schematic diagram of a system constructed according to the present invention.

FIG. 2 is a schematic diagram of a wireless transmitter according to the present invention.

FIG. 3 is a schematic diagram of a subthreshold MOSFET preamp according to the present invention.

FIG. 4 is a schematic diagram of a multiplexer according to the present invention.

FIG. 5 is a schematic diagram of a receiver according to the present invention.

DETAILED DESCRIPTION OF THE PREFERRED EMBODIMENTS

In the following description, like reference characters designate like or corresponding parts throughout the several views. Also in the following description, it is to be understood that such terms as “forward,” “rearward,” “front,” “back,” “right,” “left,” “upwardly,” “downwardly,” and the like are words of convenience and are not to be construed as limiting terms.

Referring now to the drawings in general, the illustrations are for the purpose of describing a preferred embodiment of the invention and are not intended to limit the invention thereto.

Wireless Neural Data Acquisition System

The wireless neural data acquisition system according to the present invention, generally described as **10** in FIG. 1, includes a transmitter or headstage **100**, an RF receiver **600**, an analog-to-digital (A/D) converter and digital signal processor (DSP) **700**, and an output device **800**.

Headstage

The headstage **100** is a packaged device that is secured on an animal's skull and is connected via electrode connector **1100** to implanted electrodes **900**. The headstages may also be encapsulated in commercially available biocompatible epoxies to allow them to be chronically implanted in test subjects if the user wishes to do so.

The headstage receives neural activity data from the electrodes **900**, then amplifies, filters, and transmits the neural activity data to a receiver **600**. The headstage includes an electrode connector **1100**, a pre-amp **200** for each input channel, a multiplexer (MUX) **300**, an RF modulator **400**, an input control **180**, which preferably includes a clock, an antenna **500**, and a power supply **1200**.

The head stage, shown schematically in FIG. 2, includes several components. Any type and combinations of neural electrodes can be used as the signal input electrode. The inputs from an electrode array are high passed filtered by a series coupling capacitor along with two sub-threshold MOSFETs per channel in **110**, before being sent on to a low-noise, low-power preamp **120**. The gain of each preamp is individually selectable via the digital logic **130** which receives its input from off-chip jumpers. Once filtered and amplified, neural signals are time-division multiplexed (TDM) in the multiplexer (MUX) **140**. The sequencing of the MUX analog switches is controlled, at least in part, by input control **180**, which preferably includes a clock. The output of which is ac-coupled **150** into a radio-frequency (RF) voltage-controlled oscillator (VCO) **160**. The oscillator output is a frequency modulated (FM) representation of the MUX output, and drives an impedance-matched miniaturized planar-microstrip antenna **170**.

Input/Pre-amps

The input pre-amplifier **200**, as shown in FIG. 3, is the front-end of the entire system. It records the signal of interest directly from the brain of the implanted subject, and is thus the most critical in terms of noise and distortion contributions to the overall system. Because the signal amplitude is greater as it exits the pre-amp, constant-amplitude white-noise sources that are critical in this stage, become far less important in subsequent stages. Beyond preserving the purity of the recorded signal, the front-end must amplify the signal before passing it on to subsequent stages, and filter out any out-of-band signals. There are a broad range of parameters: gain,

output swing, linearity, and bandwidth, as well as noise tolerances which have been specified and designed into the final amplifier. Since it is not possible to optimize all of these parameters, trade-offs must be made which are dependent on the application. This is one reason why off-the-shelf solutions do not work, and a custom integrated circuit (IC) was designed and fabricated for the present invention to address problems of the existing solution.

Neural signals can range from 2-Hz for EEGs up to 10 kHz for single unit action potentials. The amplifier design uses an innovative solution to high-pass filter the input with a user-selectable cutoff frequency. Additionally the gain-bandwidth product of the amplifier is adjusted to low-pass filter input signals above 10 kHz since no biological signals are present above this point. High-pass filtering in the amplifier is achieved by capacitively coupling **210** the input signal from the recording electrode to the amplifier input, and using a pair of MOSFET devices **220** operating in the sub-threshold region to set the RC pole. These two devices are connected between the non-inverting amplifier input-node **291** and the positive and negative power rails **270** and **280**, respectively. Battery/power connection V_{dd} connects to power rail **270** and connections V_{ss} and GND connect to power rail **280**. Using a single off-chip resistor **230a** connected at terminal **230**, the gate voltage of each input MOSFET can be adjusted, thereby regulating the effective resistance presented by the MOSFETs at the input node and thereby set the high-pass cutoff frequency. This can be decreased for measuring EEGs, or increased to block out EEGs when single-neuron activity is of interest. MOSFETs are used because they provide high impedance for a given amount of chip area, greatly reducing manufacturing costs. Using two devices going to opposite power rails allows the input offset voltage to the amplifier to be adjusted to overcome the small imbalance in the differential-pair **240** present in any complimentary metal-oxide semiconductor (CMOS) manufacturing process and eliminate the amplifier output offset. This configuration also eliminates the possibility of output signal drift over time seen in some single MOSFET implementations. The small input coupling capacitor **210** is also located on chip to reduce the size of the headstage. This capacitor is typically much smaller than that present at the electrode-tissue interface, making it the dominant one in a series connection. Thus, while the capability remains to optimize the sub-threshold device impedances using the off-chip resistors with the particular recording electrodes being used, using the present topology makes it generally unnecessary to do so.

Another key parameter of the pre-amp according to the present invention is gain, which is intimately related to the output swing, linearity, and power consumption of the amplifier. Gain is a function of the topology chosen and the power available. For any given topology, the higher the power consumption, the greater the gain. Neural signals range in amplitude from microvolts to tens of millivolts, and can be classified into three broad categories—small, single neuron input signals, mid-range large-amplitude single-neuron action potentials from cells adjacent to the recording electrodes and small EEG signals arising from distant neuron populations, and much larger EEG signals. Working backwards from the output VCO, it is known that the maximum input range of that RF stage is 500 mV peak-to-peak. Moreover, concentrating all of the system gain into the input stage maximizes the overall signal-to-noise ratio. This means that if there is a very small single-neuron input signal of 10-100 μ V, an ideal gain would be on the order of 5000, whereas for a much larger EEG signal of 1-10 mV, the maximum gain would be on the order of 50. In between the small single-neuron input signals

and EEG signals lie large-amplitude single-neuron action potentials from cells adjacent to the recording electrodes and small EEG signals arising from distant neuron populations. These range in amplitude from 100 μ V to 1 mV and constitute a small majority of the data recorded in a typical neurophysiologic setup. In order to maximize the present invention's range without overdriving the MUX and in turn the VCO, these signals would optimally have a gain within an order-of-magnitude of 500. When an array of recording electrodes is inserted into the brain, a number of electrodes will fall into each of the three broad categories. One of the major innovations of the preamp according to the present invention is that it provides selectable gain either for all the channels in the headstage simultaneously as explained below, or for each channel individually through off-chip jumpers. This allows an unprecedented amount of flexibility in neural recording. Upon powering up the system, the user can observe the types of signals present at each channel and tailor the gain of that channel individually. This increases the amount of data being effectively processed by the input stage, and greatly reduces the need for multiple insertions of the electrode arrays to obtain a higher signal yield on all channels, something which is very damaging to the neural tissue being examined.

The variable gain is achieved by first configuring a differential two-stage operational amplifier in a standard non-inverting resistor feedback configuration, generally shown as 295 in FIG. 3. Then, the ratio of the feedback resistors is adjusted to give a highest gain. The larger of the two resistors 293-295 is then divided into three parts, of which the first part 293 is 50 times larger than the smaller resistor 292, the second part 294 is 9 times greater than the first, and the third part 295 is 9 times greater than the second. By then connecting MOS switches 250 to either end of the second 294 and third parts 295 they are switched in and out of the feedback circuit. In this manner the gain at the output 260 can be adjusted in discreet increments of 50, 500 and 5000. The specific values are chosen in order to work well with the rest of this system. In a different application the same gain-control mechanism could yield any combination of discreet gain values desired. By connecting the on/off terminal of the switches for each input preamp to a digital logic block 130, shown in FIG. 2, integrated with the IC, the user can then scan in the desired gain for each amplifier and then store it in on-chip memory, varying these as needed over the life-cycle of the device.

Multiplexer (MUX)

The MUX 300, shown in more detail in FIG. 4, receives the signals from the pre-amps and converts them into a single channel using time-division multiplexing (TDM). The MUX takes the input channel signals; time slices them, and then merges them into a single signal for output to the RF modulator.

The MUX provides rapid signal settling through properly tuned charge injection in order to increase the number of channels that can be multiplexed. The sampling rate limit is a function of the MUX output settling time and the speed of the internal clock which can be controlled through an off-chip resistor. The MUX output settles quickly enough so that a clean sample can be taken before the MUX switches to the next channel. Alternatively, the sampling rate can be slow enough such that the MUX output signal has settled sufficiently so that an accurate sample can be taken before the MUX switches to the next channel.

Any number of channels may be multiplexed, provided that the frequency of the clock at least equals the product of the number of channels and the desired sampling rate per channel. In the MUX according to the present invention, the sampling rate can go up to 5 MHz allowing 100 channels at the

industry standard 50 kHz sampling-rate per channel for neural signals, or 250 channels at the minimum 20 kHz per channel for biological signals, which are band-limited to 10 kHz. In the prototype headstage the number of channels multiplexed is 17, composed of 16 data input channels and 1 reference channel driving the MUX input nodes 310. These then charge the MOS storage capacitors 320. A ring oscillator 340 generates a clock signal at a frequency determined by an off-chip tuning resistor 350. The clock signal drives a digital logic block 360 which cyclically rotates through the array of switches 330 determining which single channel drives the output buffer amplifier 370 at any given time. The slew-rate, and current-driving capabilities of the output buffer, can also be adjusted by an off-chip resistor 380. The buffered TDM output is then presented to the MUX output 390 which drives the RF modulator.

When the MUX according to the present invention is run at 850 kHz, well below its capacity and thus at lower power, this frequency results in each channel being sampled at 50 kHz. In a preferred embodiment of the present invention, 16 data channels are adequate for most neurological applications, however, the present invention can be designed to multiplex at least about 32 channels, and an increased number of channels multiplexed is contemplated as applications requiring the use of more channels are developed.

The present invention's multiplexer is a low power consumption design. Low power-consumption is achieved through the use of a carefully tuned current-starved ring oscillator 340, and low-power output-buffer 370. This is possible because the MUX only needs enough power to drive the capacitive load presented by the VCO, not the 50 Ω load required for most off-the-shelf multiplexers designed for other types of applications. The low power consumption MUX according to the present invention draws less than about 3 mA from a 2.8 V supply for a total power consumption less than about 9 mW, permitting longer operation periods of the system.

The RF modulator 400 is a high-frequency, wide-band Voltage Controlled Oscillator (VCO). The carrier wave frequency is designed for the microwave spectrum to reduce antenna size, but on the lower end of the microwave spectrum so as to not be impeded by biological tissue. Thus, the frequency used can range from between about 2.4 GHz to no greater than about 4 GHz. At the bottom end of this range, 2.4 GHz, water molecules resonate, effectively blocking signal propagation. Additionally there is a large amount of third-party interferers from local 802.11 WiFi and Bluetooth networks. At the high end of this range, signal attenuation through the biological milieu becomes excessive. The present invention includes three VCOs designed with a center frequency of 2.8, 3.2, and 3.6 GHz.

The RF modulator 400 uses wideband frequency modulation, modulating the frequency to about 10% of center frequency. For example, a 3.2 GHz center frequency is modulated about a 300 MHz band. Thus, the frequency band is between about 3.05 to about 3.35 GHz for one transmitter. Other transmitters with 300 MHz bandwidths centered at 2.8 GHz and 3.6 GHz have been built. These 3 center frequencies can be used with a 300 MHz bandwidth simultaneously without overlap. This use of frequency diversity permits the operation of multiple devices in the same area simultaneously.

Advantageously, the wideband frequency modulation reduces the sensitivity to phase noise, thereby obviating some of the more complex, power-intensive, and unreliable techniques commonly used to reduce phase noise in CMOS cross-coupled VCOs.

The antenna **500** is preferably a microstrip patch antenna. Both rectangular and planar inverted-f (PIFA) patch antennas are used in our system. A microstrip patch antenna is advantageous in several respects. It has a planar form that is easy to integrate into the headstage and biological systems in general; its signal pattern is more reliable than other antenna designs; and power consumption is reduced with respect to other types of antennas. Additionally, microstrip patch antennas are mass produced more economically than other antenna designs and can be integrated onto the headstage circuit board.

Alternative antenna designs include monopole, dipole, and whip antennas. Of these, the monopole is the most desirable, as they all perform similarly, but the monopole is the smallest. The advantage of the patch over the monopole lies in the improved radiation pattern, and better form factor.

Antennas designed to operate in free-space have their maximum radiating dimension, and thus their overall size, determined by the wavelength of the transmit signal frequency and the relative permittivity, which is 1 in free-space. Implanting microstrip antennas in biological tissues places them in an environment with a relative permittivity on the order of 35 for skin, allowing them to be substantially reduced in overall size and thus the overall size of the implanted device, while using the same design equations commonly used in free-space.

Thus, the antenna resistance is preferably about the resistance of free space, approximately 377 Ohms, in order to provide better transmission. Alternatively, the resistance can be lower with the corresponding reduced transmission range. For example, for applications where a short transmission range is acceptable, a 50 ohm antenna can be used. These types of antennas are mass-produced and therefore readily available and lower cost than higher-resistance antennas.

In an example embodiment, the antenna range is less than 10 meters. This short range permits denser use of the devices, optimizing laboratory or clinic space.

Additionally, the use of a custom high impedance antenna matched to free-space or the higher output impedance of the VCO, eliminates the need for a power amplifier in the headstage output, allowing the VCO to drive the antenna directly. This novel usage results in a substantial power savings and reduction in overall system complexity.

The reduced power requirements permit use of between about 3.0 to about 3.6 volt battery, regulated by a fixed 2.8 volt supply with a 1.4 volt AC ground reference. This allows operating the entire device from a single battery (not shown), which is preferable. The battery is preferably a rechargeable battery that provides a reduced size per battery capacity. For example, currently, a rechargeable lithium-ion battery provides the greatest capacity with smallest size. Also, the battery can be preferably recharged through inductive coupling.

Currently, at least about 8 hours are needed to perform a neurological experiment, although some researchers desire as much as 24 hours. Therefore, the battery capacity should be adequate to provide at least about 8 hours of experiment time, more preferably at least about 24 hours.

The design of the present invention provides for a greatly reduced power consumption and reduced signal pathway. It does so primarily by using a low-power preamp, passive high-pass filtering, current-starved clock generators, low-power MUX buffer, high impedance MUX load, and a matched antenna driven directly by the VCO with no power amplifier. In a preferred embodiment, power consumption is about 4 mA at 2.8 V. This allows for greater than 24 hours of continuous operation from a miniature 100 mA-hr Li-Ion battery.

The power signal pathway is reduced because the signal from the MUX goes to the Voltage Control Oscillator (VCO) and the VCO output signal goes directly to the antenna. No power amplifier is needed prior to sending the signal to the antenna.

The wireless receiver, generally described as **20** in FIGS. **1** and **5**, includes an RF receiver **600** and A/D converter and DSP **700**.

The RF receiver **600** includes at least one antenna, a RF splitter, RF bandpass filters, RF amplifiers, RF attenuators, and an FM demodulator.

The RF receiver preferably uses antenna diversity to increase reliability. Multiple antennas **605** are preferably used to provide multiple signals that are then combined into a single signal at a splitter **608**. Combining the signals allow for greater system reliability and signal strength by avoiding multipath interference. Multipath interference occurs when two or more incoming signals from the same source arrive at their destination along different paths. This interference is called destructive when the phase of the incoming signals is such that they cancel out at the receiver. Integrated antenna diversity systems reduce the probability of destructive interference at the receiver as a result of incoming multipath waves. Antenna diversity systems are those in which two or more antennas differing in one or more ways are incorporated onto the same platform. The received signals from the multiple antennas may then be combined, minimizing the probability of data loss.

There are four principal ways in which antennas are commonly made to differ in diversity systems. The first and most commonly used is frequency, or spread spectrum diversity, where an antenna is made to transmit at more than one frequency. In the present invention, it is preferable to use spread spectrum diversity is used at the transmitter not to overcome multipath interference, but to allow more than one device to be used in the same area simultaneously.

Another very common diversity technique consists in combining antennas of differing polarizations. Typically, though not necessarily, an antenna operate using two different orthogonal polarizations. A third technique, spatial diversity, is one in which the antennas are separated by some optimum distance. This distance is determined by a variety of factors including the wavelength of incoming signals and the anticipated angle of signal arrival. The fourth and final technique, pattern diversity, is one in which multiple antennas of differing patterns are used. In this final form of antenna diversity each pattern will fill in the "blind spots" or nulls of the other patterns. A null is that part of the three-dimensional space which the antenna cannot detect.

Spatial, polarization and pattern diversity schemes have been successfully used both together and individually to optimize our received signal reliability. Specifically we rotate one antenna 45 degrees with respect to the other to provide some measure of polarization diversity and space them a non-integer number of wavelengths apart to provide spatial diversity which is then optimized experimentally.

A combination of RF bandpass filters, RF amplifiers, and RF attenuators are used to filter, amplify and reduce reflected signal amplitudes respectively prior to demodulation. The RF bandpass filters **610** are necessary to filter out out-of-band signals like WiFi and Bluetooth, as well as unintentional radiators like microwave ovens. The amplifiers **620** boost the signal strength of the received signal. The RF attenuators **630** decrease the signal strength of both the forward and reflected signals arising from slight impedance mismatches. This is carefully tuned to maximize the amplitude of the desirable

forward signal while keeping the reflected signal amplitude below the point where it will distort the demodulated output.

The FM demodulator **640** uses FM Phase discrimination to convert the radio signal into an output voltage. The FM phase discriminator uses the product of the received signal with a phase-delayed version of the received signal, followed by a low-pass filter to convert the FM frequency to an output voltage. While discriminators have been around since the 1940's, their use in receiving low-power biological signal transmissions is novel. All of the advantages provided by the wideband VCO are moot without an adequate low-noise receiver to track the frequency changes. Conventional FM receiver technology today uses Phase Locked-Loops (PLLs), but these are incapable of locking onto signal bands as wide as used in the present invention.

The RF receiver also includes a mixer **650** and a VCO **660** to down-convert the received signal to a more manageable frequency, relaxing the requirements on subsequent components in the signal path, which in turn increases the number of off-the-shelf components which meet our specifications. The VCO frequency is adjusted by an on-board resistor divider **670**. The power supplies for each of the components in the receiver are generated **680** from a single regulated battery voltage to provide high stability and reliability in the signal quality.

The voltage output of the FM discriminator is band-pass filtered **710** to remove any high-frequency components which would alias into the signal bandwidth during analog to digital conversion. This signal, which matches the output of the MUX in our headstage, is then convert into a digital signal by the A/D converter **730**. The Digital Signal Processor (DSP) **740** then interprets the TDM signal to extract a single digital sample from each block of time at which the analog MUX originally sampled an individual preamp output. This is done for each channel using real-time algorithms stored in Flash memory **760**. Simultaneously, the digital signals are amplified and filtered to restore a high-fidelity reproduction of the original neural signal seen by the electrodes which is then stored in on-board SRAM memory **770**. The amplification and filtering parameters can be modified by the user in real time.

The final task of the DSP is to output the data to a user-specified device. Two options exist. The data can be sent out a digital communication interface **750**, such as a Universal Serial Bus (USB) port, to any PC **800** so equipped and then be displayed or recorded using any number of readily available software packages. The use of the USB eliminates the need for one of the very expensive commercially available data-acquisition systems available for biological signals. Alternatively the DSP can re-convert the digital stream into however many analog channels that are present in the headstage and output those in parallel to an oscilloscope or other data acquisition system (not shown). The ability to perform all of these functions in real time is a novel feature and a result of the careful component choice for the DSP that makes the receiver system very useful for biological applications.

The present invention achieves system robustness through the use of antenna pattern, polarization, and spatial diversity to improve reception, and frequency diversity to increase the number of simultaneous devices.

The present invention reduces power consumption through a variety of technical innovations—dual-subthreshold input MOSFETs require no power; the remainder of the input pre-amp uses less than 50 μ W per channel; the MUX architecture is optimized for low-voltage operation; the RF Modulator is designed to drive an antenna without the need for a power-amplifier; the antennas are designed to radiate efficiently with

low power, maximizing needed reliability at the expense of unnecessary range. Additionally, the low-range transmission permits multiple experiments or clinical neural data acquisition to be performed simultaneously in the same laboratory or clinic. The low-power consumption permits more channels/power source and/or more time/battery capacity.

The Wideband FM technology permits greater resolution of low-amplitude biological signals, higher phase noise tolerance with lower added noise, and large number of multiplexed analog channels to operate simultaneously.

Thus the low-range transmission in combination with the wideband FM technology permits multiple experimental or clinical applications to occur in closer proximity than prior art wireless technologies.

Importantly, robust chip design is used with the present invention because chip manufacturing tolerances in a typical CMOS process can vary by $\pm 50\%$ of specified target. Also, because invasive neurological sampling is very sensitive and delicate surgery, minimum adjustment of the inserted electrodes is desirable. The present invention is thus designed with several key off-chip nodes at which the on-chip operating parameters can be tuned and optimized. Dual subthreshold input MOSFETs allows for easy tuning of input high-pass filter cutoff frequencies. Digital on-chip memory and scan-chain allows real-time programming of individual channel gain as well as the ability to turn off inactive channels to save power and maximize operating time.

The present invention is also applicable for use in a method of neural data monitoring, including the steps of: (1) providing a wireless neural data acquisition system, as described above; and (2) acquiring data from the wireless neural data acquisition system. Furthermore, the present invention is applicable for use in a method of neural data monitoring, including the steps of: (1) implanting the headstage in a living being; (2) wirelessly transmitting data from the headstage; (3) receiving the data via the RF receiver; and (4) storing the data.

Certain modifications and improvements will occur to those skilled in the art upon a reading of the foregoing description. By way of example, one application for using the system and/or device of the present invention is in a method to monitor and/or control a prosthetic device by providing stimulation from a wireless neural system. Also, By way of example, one application for using the system and/or device of the present invention is in a method to therapeutically monitor and/or treat a living being by providing stimulation from a wireless neural system. Numerous characteristics and advantages have been set forth in the foregoing description, together with details of structure and function. The novel features however are pointed out in the appended claims.

What is claimed is:

1. A headstage for a neural data acquisition system, the headstage comprising:
 - an Input Pre-amplifier;
 - a multiplexer (MUX) for multiplexing at least one channel; and
 - an RF Modulator comprising a voltage control oscillator (VCO),
 wherein an input filter of the Input Pre-amplifier is tuned by adjusting the gate voltage of a transistor operating in sub-threshold mode, and
 - wherein input impedance of the RF Modulator is configured to allow the MUX to drive the RF stare directly.
2. The headstage of claim 1, wherein the at least one transistor is an on-chip resistor.
3. The headstage of claim 1, wherein the at least one on-chip transistor includes at least two dual stacked transistors.

11

4. The headstage of claim 1, wherein the at least one transistor includes at least one metal-oxide-semiconductor field-effect transistor (MOSFET).

5. The headstage of claim 1, wherein the Input Pre-amplifier is a capacitor coupled high pass filter.

6. The headstage of claim 1, wherein the at least one transistor includes dual stacked on-chip sub-threshold transistors, and wherein the input bias voltage of the Pre-amplifier is tuned by the gate voltage of the dual stacked on-chip sub-threshold transistors for the at least one channel with at least one off-chip resistor.

7. The headstage of claim 1, wherein the input filter is configured to filter at a bandwidth of 0.1-10 kHz bandwidth.

8. The headstage of claim 1, wherein the Pre-amplifier has user-selectable gain for all channels and for each channel individually.

9. The headstage of claim 1, further including a transmitting antenna configured to transmit at a range of about less than 10 meters, thereby permitting denser use.

10. The headstage of claim 1, further including a power supply.

11. The headstage of claim 1, further including a clock.

12. A headstage for a neural data acquisition system, the headstage comprising:

an Input Pre-amplifier;

a multiplexer (MUX) for multiplexing at least one channel, wherein an input filter of the Input Pre-amplifier is tuned by at least one resistor; and

an RF Modulator comprising a voltage control oscillator (VCO), wherein input impedance of the RE Modulator is configured to allow the MUX to drive the RF stage directly.

13. The headstage of claim 12, wherein the at least one resistor is a transistor configured to operate as a resistor.

14. The headstage of claim 12, wherein the at least one resistor is an on-chip resistor.

15. The headstage of claim 14, wherein the at least one on-chip resistor includes at least two dual stacked resistors.

16. The headstage of claim 12, wherein the at least one resistor includes a transistor operating in sub-threshold mode.

17. The headstage of claim 12, wherein the Input Pre-amplifier is a capacitor coupled high pass filter.

18. The headstage of claim 12, wherein the input filter is configured to filter at a bandwidth of 0.1-10 kHz bandwidth.

19. The headstage of claim 12, wherein the Pre-amplifier has user-selectable gain for all channels and for each channel individually.

12

20. The headstage of claim 12, wherein the MUX is configured to sample at greater than 50 kHz per channel and is configured to multiplex from a number of channels selected from at least 16 channels, at least 32 channels, at least 100 channels, and at least 250 channels.

21. The headstage of claim 12, further including a transmitting antenna configured to transmit at a range of about less than 10 meters, thereby permitting denser use.

22. The headstage of claim 12, further including a power supply and a clock.

23. A method of neural data monitoring, comprising the steps of:

implanting electrodes into the brain of a specimen;

connecting the electrode connector of a headstage to the implanted electrodes, wherein the headstage includes an Input Pre-amplifier, a multiplexer (MUX) for multiplexing at least one channel,

wherein an input filter of the Input Pre-amplifier is tuned by adjusting the gate voltage of a transistor operating in sub-threshold mode,

wherein the at least one transistor includes dual stacked on-chip sub-threshold transistors, and wherein the input bias voltage of the Pre-amplifier is tuned by the gate voltage of the dual stacked on-chip sub-threshold transistors for the at least one channel with at least one off-chip resistor; and

transmitting neural data via a transmitting antenna.

24. A headstage for a neural data acquisition system, the headstage comprising:

an Input Pre-amplifier; and

a multiplexer (MUX) for multiplexing at least one channel, wherein an input filter of the Input Pre-amplifier is tuned by adjusting the gate voltage of at least one transistor operating in sub-threshold mode,

wherein the at least one transistor includes dual stacked on-chip sub-threshold transistors, and

wherein the input bias voltage of the Pre-amplifier is tuned by the gate voltage of the dual stacked on-chip sub-threshold transistors for the at least one channel with at least one off-chip resistor.

25. The headstage of claim 24, wherein the Input Pre-amplifier is a capacitor coupled high pass filter.

26. The headstage of claim 24, wherein the input filter is configured to filter at a bandwidth of 0.1-10 kHz bandwidth.

27. The headstage of claim 24, wherein the Pre-amplifier has user-selectable gain for all channels and for each channel individually.

* * * * *

UNITED STATES PATENT AND TRADEMARK OFFICE
CERTIFICATE OF CORRECTION

PATENT NO. : 7,639,983 B2
APPLICATION NO. : 12/033220
DATED : December 29, 2009
INVENTOR(S) : Pedro Irazoqui-Pastor et al.

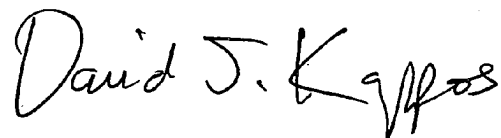
Page 1 of 1

It is certified that error appears in the above-identified patent and that said Letters Patent is hereby corrected as shown below:

In Column 10, Line 63 of Claim 1, after RF and before the word directly, stare should be "stage"

Signed and Sealed this

Twenty-third Day of March, 2010

A handwritten signature in black ink that reads "David J. Kappos". The signature is written in a cursive style with a large, prominent 'D' and 'K'.

David J. Kappos
Director of the United States Patent and Trademark Office