



WIRELESS RECORDING

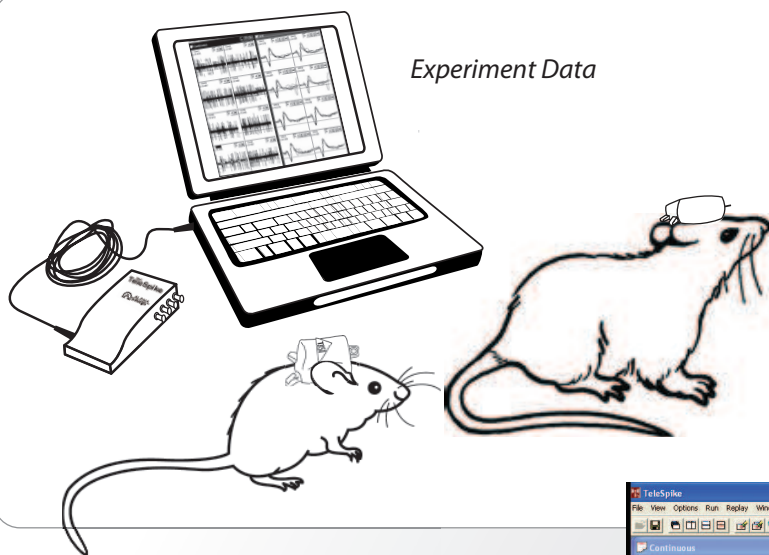
TeleSpike Mini™

5 Channel Wireless Recording System

TeleSpike Mini is a complete wireless data filtering and acquisition system used to record neural activity of a test subject in normal surroundings with unrestricted movement. TeleSpike Mini can record data from up to 5 electrodes, transmitting it to the host computer that can be located up to 3 meters away.

Different Acquisition Modes: –The system allows the acquisition, display, and saving of the following:

- Continuous analog channel of all electrodes
- Spike shapes that crossed a trigger level set by the user for each individual channel for all electrodes
- Local Field Potential activity from all electrodes.
- 4 analog channels of behavioral data
- 16 digital channels of behavioral data, either as single bits or as one port



Receiver



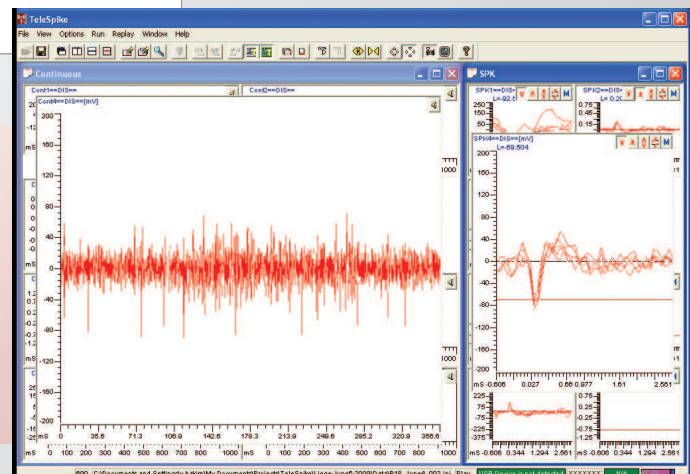
Transmitter

Amplification

- Analog, low-noise amplifiers amplify signals from the microelectrode

Control

- Host computer has access to all features and can control the different parameters of the system



Compatibility

- Various electrode types can be accommodated
- Files can be saved as: MAP or PLX format
- File converter for Matlab, TXT (ASCII), Matrix is also available

The package includes:

- Transmitter
- Receiver
- USB cables
- Data Acquisition Software

Product Specifications

	GENERAL
Channel count	5 Electrode, 4 GP Analog inputs, and one 16 bit Digital Port
Transmitter Unit Weight	2.7 Grams
Transmission range	3 meter
Rechargeable Battery Life	2.5 hours (1 hour recharge time)
	ELECTRODE CHANNELS
Amplifiers Input	Single ended
Dynamic input range	+/- 1.5 mV
Gain	600
Band Pass for Spike Signal	HP 260-400Hz (Software controlled) LP 7KHz
Band Pass for LFP Signal	0.8Hz – 300Hz
Input Impedance	22MΩ At 1 KHz
A/D resolution	12 bits
A/D Sampling Rate for Spikes	25.21...KHz (fixed)
A/D Sampling Rate for LFP	787...Hz(fixed)
Segmentation Method	Level Threshold Crossing
Duration of Spike Segment	1.933mSec (Fixed) 48 samples - 10 before level crossing and 38 after
	GP ANALOG INPUTS
Amplifiers Input	Differential
Dynamic input range	+/- 6V
Band Pass	HP 0.2Hz – 1.75KHz
Sampling Rate	3.5KHz – 5KHz (Software controlled)
	GP DIGITAL INPUTS
Input channels	Single bits, Port, or Strobed Port - Standard TTL
Strobe Input	Standard TTL
Sampling Rate	20.168 KHz

Maximize the Potential of Your Research with Wireless Microelectrode Recording!



— Defining Neuroscience Technology

www.alphaomega-eng.com

Alpha Omega Co. USA

105 Nobel Court
Ste 101
Alpharetta, GA 30005
Toll Free (877) 919-6288
Fax (877) 471-2055

info-USA@alphaomega-eng.com

Alpha Omega GmbH

Ubstadter Str. 28
76698 Ubstadt - Weiher
Germany
Toll Free: 00-800-2574-2111
Fax: +49-721-239-1034

info-EU@alphaomega-eng.com

Alpha Omega Engineering

Avuda St.3 ; PO Box 810
Nazareth Illit 17105
Israel
Tel +972-4-656-3327
Fax +972-4-657-5075

info@alphaomega-eng.com